

## Let's take a student health examination!

We have compiled the precautions for health examinations.

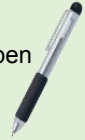


We have regular health examination in accordance with the School Health Law.



Student ID card

A black ballpoint pen



Please print it out A4 size from the website of the Health Center and fill it out.

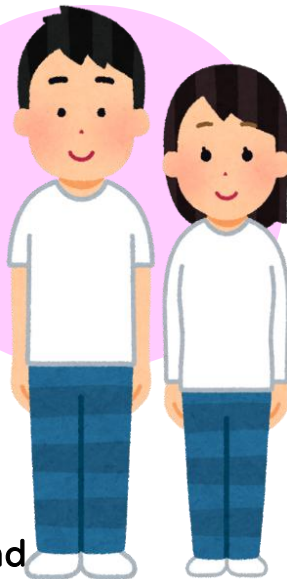


Hair elastic (for long hair)

How about your belongings and clothes for the day?



For X-rays you can only wear **thin plain underwear or T-shirts (Long or short sleeves, any color)**.



We recommend dark colored T-shirts. Have shoes that are easy to take off.

Wear clothing and shoes that are easy to put on and take off.

**These clothes are no good.**

- Pocket / Button / Pattern / Lace / Embroidery / Back Print
- Necklaces and other metals

Use of a mask is up to your decision.

